

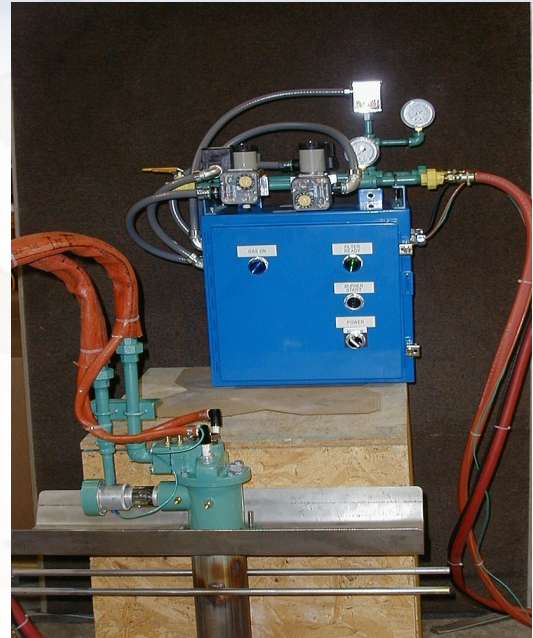
FILTER PREHEAT BURNER HVB610 SERIES

HVB-610 Series preheat burners provide aluminum cast shops with safe and reliable preheating of filter bowls and ceramic foam filters (CFF).

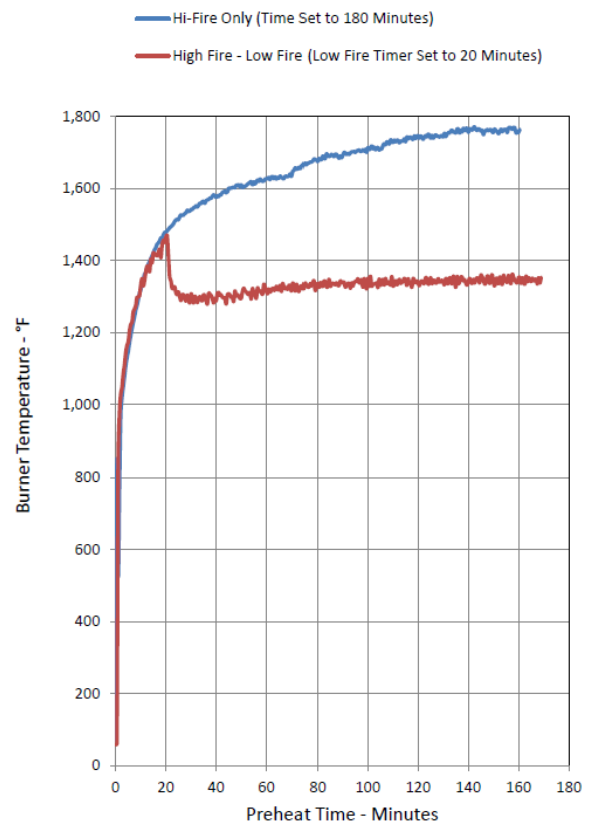
The special technology of the SELEE® HVB-610 filter preheat burner makes it capable of operating with up to 300% excess air, resulting in safe and uniform heating of the entire filter structure and refractory filter bowl.

A burner boot contains the flame, allowing only hot combustion gases at the proper temperature to reach the filter preventing damage to the filter and gasket material.

A control panel controls the burner flame and spark ignition, with easy ON-OFF capability. A timer relay monitors the heating cycle, energizing the “Filter Ready” light at the end of the cycle.



- **Uniform filter and gasket heating resulting in optimum expansion**
- **Improve filter priming by providing consistent heat transfer throughout the filter structure**
- **Eliminate filter and filter bowl damage from overheating**
- **Can be left on during start-up delays for up to 2 hours**
- **“Filter Ready” light gives operators clear indication when filter is ready for casting**



SELEE® Corporation
700 Shepherd Street
Hendersonville, NC 28792, USA

+1.828.697.2411 (Main)
+1.828.694.3450 (Sales)
+1.800.438.7274 (Toll-Free)
customerservice@selee.com
www.selee.com